



Atmoscan™ Trolley

Enhance your Atmoscan™ with a new Trolley for improved reliability and performance!

Innovative Silicon Systems offers an improved-design trolley that features a hardened roller bearing and simplified but stiffer lift mechanism for greater reliability, lower particles and near-zero maintenance. The trolley is available with a fixed or rotating top platform, two different T-handle lengths, and your choice of various boat support materials.

The trolley is fabricated from hard anodized aluminum alloy plates with stainless steel axles and lift bars. The axle uses twin cams to lift the upper platform with a ¼-turn of the T-handle. Each cam has a needle roller bearing that acts against a stainless steel bearing plate in the lower platform, providing smooth and easy lifting and minimizing particles and wear. The upper and lower platforms are connected by rigid stainless steel links pivoting on oversize shoulder screws for exceptional stability. All connections are easily accessed from the outside of the trolley for simplified maintenance.

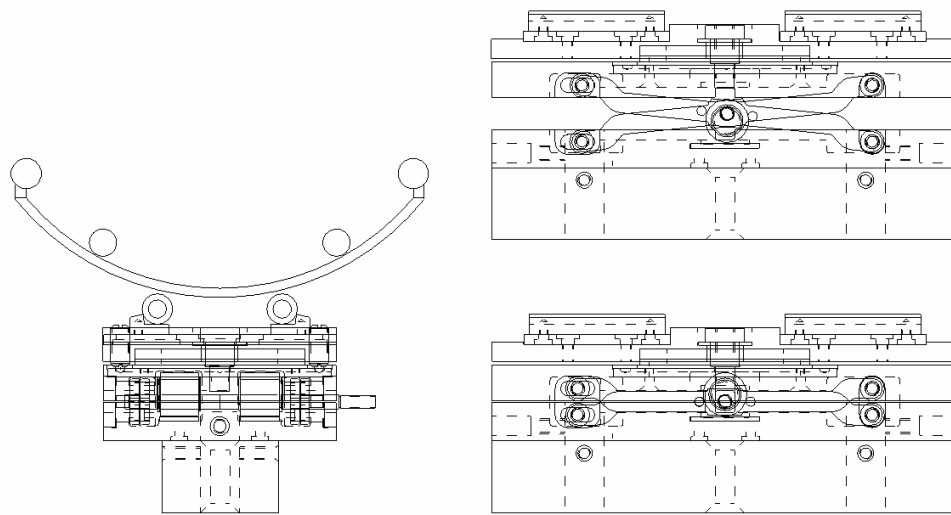


The optional rotating top platform allows for easier placement and removal of wafer boats. The platform rests on a large needle roller thrust bearing, providing smooth pivots and great stability. Adjustable spring loaded pins supply positive stops at right angle positions.

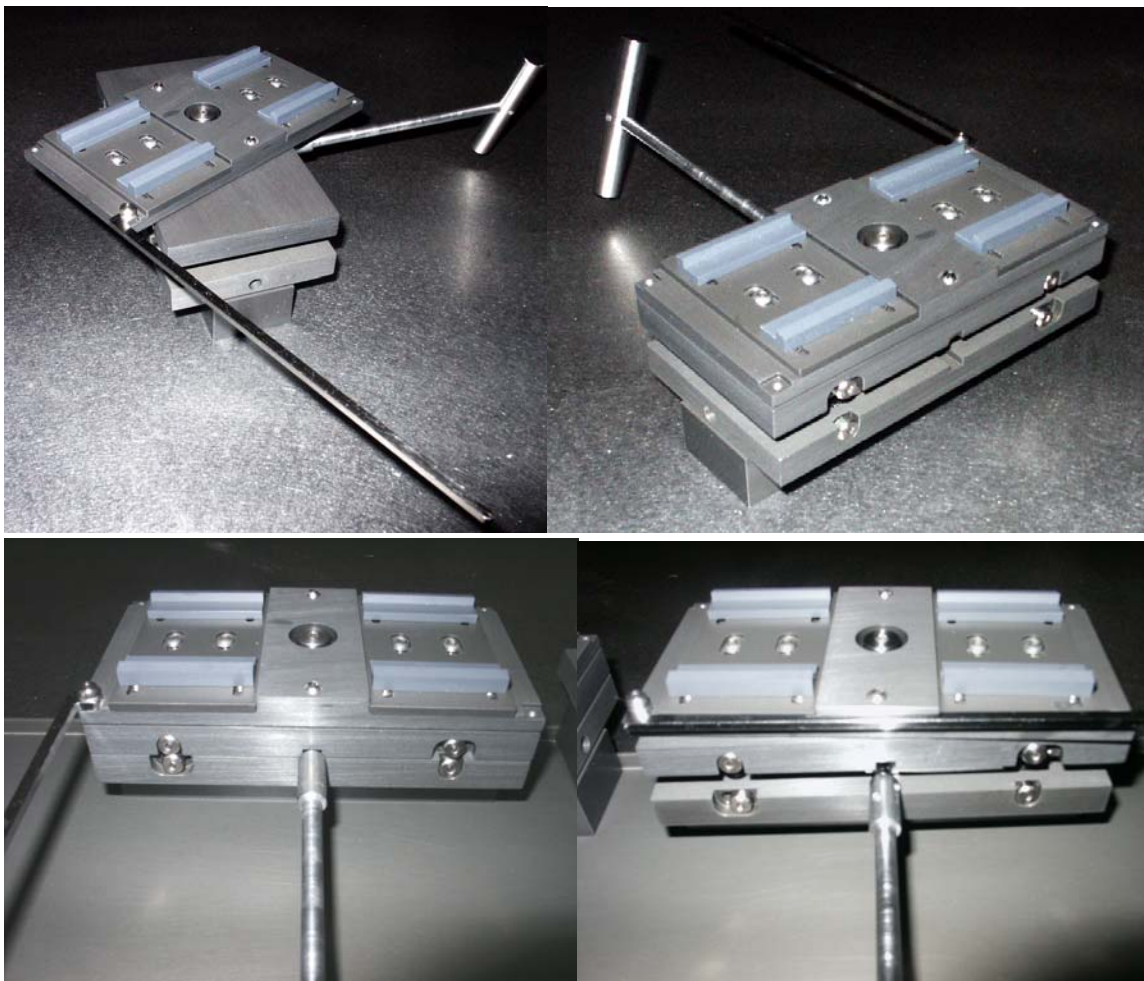


Innovative Silicon Systems

1203 Foxworthy Ave. San Jose, California 95118-1212
Tel: 408-265-4842 Fax: 408-265-7108 email: isilicon@ix.netcom.com
www.isilicon.net



Schematic of Trolley



innovative Silicon Systems

1203 Foxworthy Ave. San Jose, California 95118-1212
 Tel: 408-265-4842 Fax: 408-265-7108 email: isilicon@ix.netcom.com
www.isilicon.net

Trolleys are custom made to fit your system. To order, please provide the following information to the factory or sales rep, or provide us with one of your existing trolleys.

1. Dimensioned drawing of Atmoscan™ tube showing ID, OD, and opening slot.
2. Dimensioned drawing of your wafer boat
3. Distance from top of rolling base that trolley sits on to underside of Atmoscan™ tube.
4. Amount of trolley lift desired (Raised height minus lowered height). Please specify a minimum and maximum value.
5. The diameter and height of the alignment pin on the rolling base that the trolley sits on. (Or ID of the pin hole in your existing trolley base)
6. The width of the trolley base or width of the opening in the boatloader that the trolley base has to fit into.
7. Length of T-handle desired; Short (3”) or Long (5.5”)
8. Photo or dimensioned drawing of the top of existing trolley to determine the boat supports.
9. Desired material for boat supports:
 - PVC
 - PEEK
 - Vespel™
10. Fixed or Rotating top platform?

innovative Silicon Systems provides a wide range of semiconductor productivity enhancement tools and services. We would welcome the opportunity to discuss your specific needs.

